



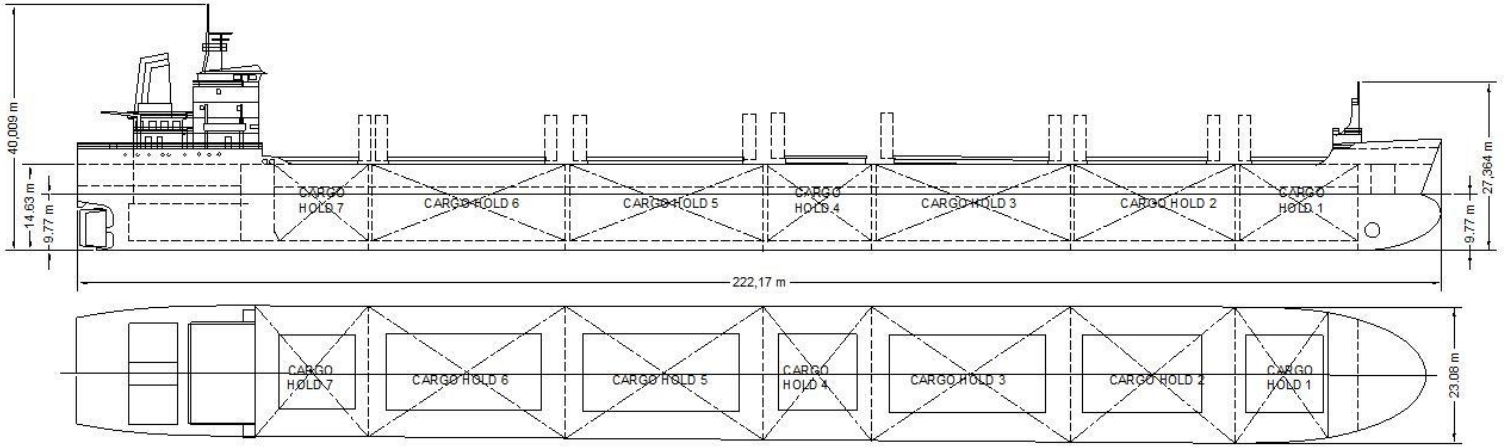
## TECHNICAL SPECIFICATIONS

Vessel type	Great Lakes, Bulk Carrier
Deadweight (DWT)	38,295 tonnes
Built	1983
Classification	+ 100 A1
Length Overall	222.17 meters
Breadth Moulded	23.08 meters
Total Hold Capacity (including hatches)	45,949 cubic meters
Gross Tonnage (GT)	22,388 tonnes
Net Tonnage (NT)	11,648 tonnes
Thrusters	Bow
Horsepower	BHP: 9120   kW: 6801

MV *Spruceglen* was built in 1983. She is a maximum Seaway, Great Lakes bulk carrier. She has 7 folding hatches and 7 cargo holds. Her home port is the port of Montreal.

# SPRUCEGLEN

# BULK CARRIER



## DRAFT AND DEADWEIGHT

MARK (IN FW)	DRAFT		DEADWEIGHT	
	Meters	Feet	Tonnes	LT
Summer	9.77	32' 00"	34,176	33,636
Seaway	8.80	26' 51"	26,291	25,875

## HOLD CAPACITIES

COMPARTEMENT	Cubic Meters	Cubic Feet
Hold # 1	4,595	162,271
Hold # 2	6,771	239,116
Hold # 3	8,614	304,201
Hold # 4	4,709	166,297
Hold # 5	8,665	306,002
Hold # 6	8,642	305,189
Hold # 7	3,953	139,599
Net Hold Capacity	45,949	1,622,674

## PRINCIPAL DIMENSIONS

DESCRIPTION	Meters	Feet
Length Overall	222.17	729' 11"
Length B.P.	216.1	708' 11"
Breadth	23.08	75' 08"
Depth	14.63	47' 11"

## TPC AND TPI (AT SEAWAY DRAFT)

TPC (t/cm)	47
TPI (t/in)	119.4

## HATCH DIMENSIONS

LENGTH	WIDTH
Dimensions varies, Folding hatch covers	