



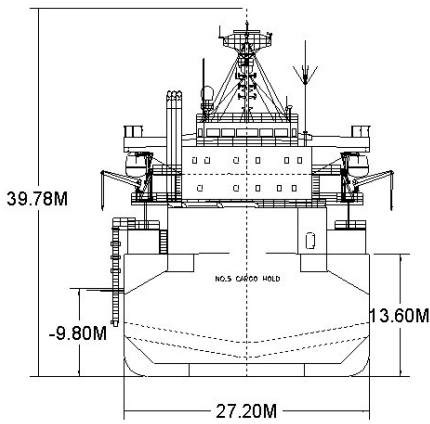
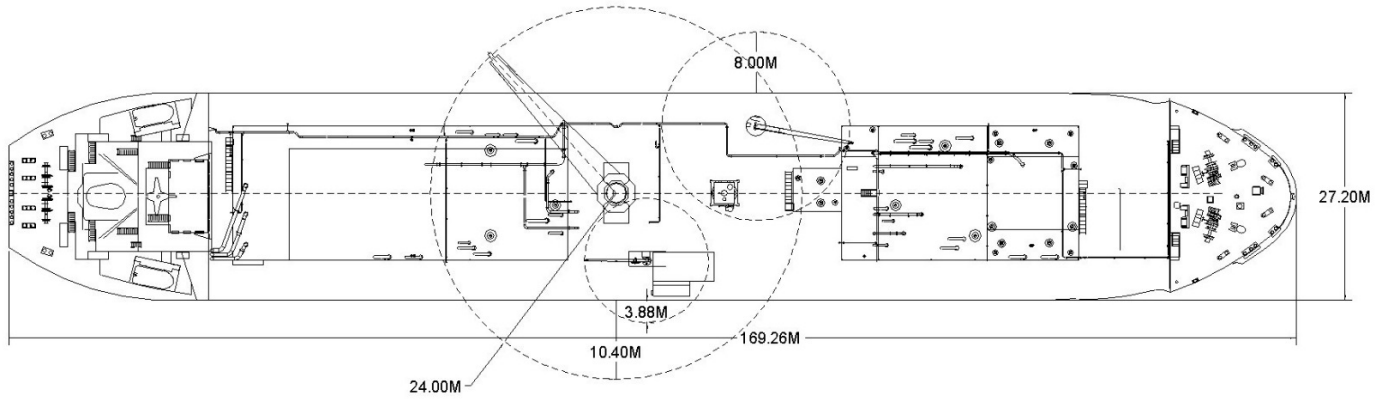
## TECHNICAL SPECIFICATIONS

Built	2006 (converted to pneumatic cement carrier in 2018)
Classification	ABS ✕A1, E, ✕AMS, ✕ACCU, UWILD, RW, BWT with description 'Cement Carrier'
Length overall (m)	169.26
Breadth Moulded (m)	27.20
Depth Moulded (m)	13.60
Total Hold Capacity (m <sup>3</sup> )	26,778
Deadweight (t)	26,770
Draft (m)	9.78
Gross Tonnage	17,804
Net Tonnage	7,225
Bow Thruster (kW)	1,300
Discharge Rate (max tph)	Port and Starboard Side 4 x 400NB lines @ 300 tph ea. or 2x 400NB lines @ 600tph ea.

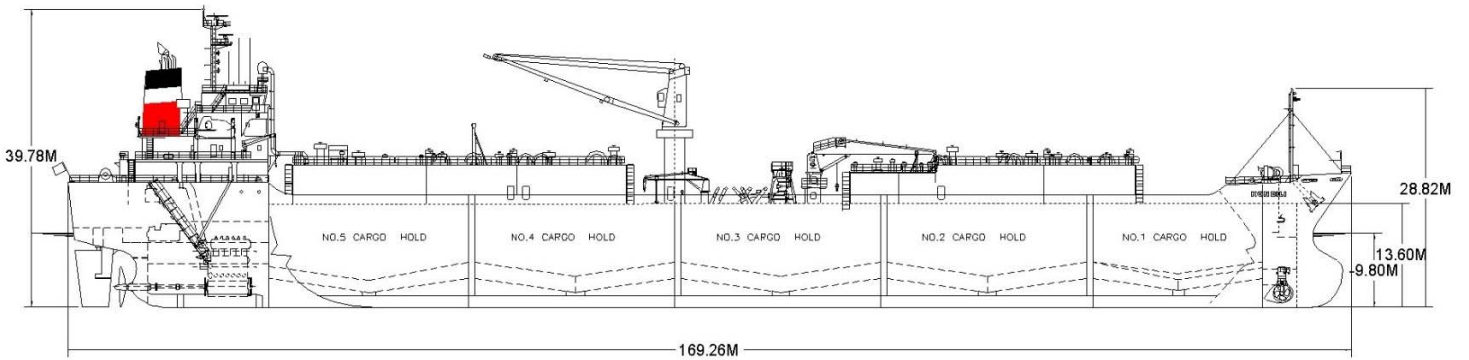
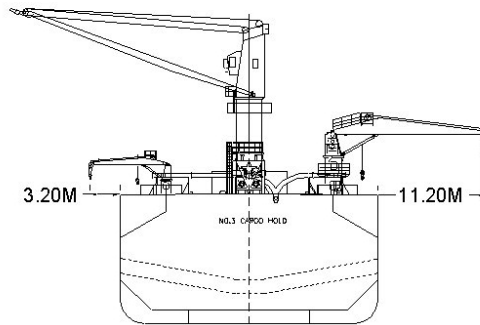
The pneumatic cement carrier *Kondili* carries cement and fly ash.

*Kondili* was converted from a handy size bulk carrier to a cement carrier in 2018.

# KONDILI



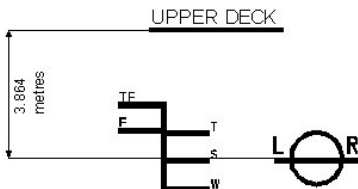
ASSIGNED DRAFT			
Season	Draft (metre)	Displ. (tonnes)	DWT (tonnes)
TF	10.20	35,342	27,519
F	10.00	34,558	26,735
T	9.98	35,375	27,552
S	9.78	34,554	26,731
W	9.58	33,762	25,939



# PNEUMATIC CEMENT VESSEL

DEADWEIGHT SCALE - MV KONDILI

	DRAFT				DISPLACEMENT (tonnes)	TPC (tonnes)	DEADWEIGHT (tonnes)	DRAFT	
	Sea Water		Fresh Water					Sea Water	
	(metres)	(feet)	(metres)	(feet)				(feet)	(metres)
		36	11	36		30,000	36		
		34		34	40.0		34	10	
10				34	35,000				
		32	10	32		25,000	32		
		30		30	39.0		30	9	
9			9	30	30,000				
		28		28		20,000	28	8	
8			8	26	38.0		26		
		24		24	25,000		24	7	
7			7	22	37.0		22		
		22		22		15,000	20	6	
6			6	20	20,000		20		
		18		18		10,000	18	5	
5			5	16	36.0		16		
		16		16		5,000	14	4	
4			4	14	35.0		14		
		12		12		10,000	12	3	
3			3	10	34.0		10		
		10		10		0,00	8	2	
2			2	8	5,000		8		



lightship 7823 t

## HATCH AND HOLD SPECIFICATIONS

### HOLD VOLUMES (CUBIC METRES)

HOLD NUMBER	1	2	3	4	5	TOTAL
Total Volume (m <sup>3</sup> )	3,854	5,779	6,145	5,780	5,220	26,778
Volume net 1.1m ullage (m <sup>3</sup> )	3,561	4,503	5,684	5,423	4,813	24,884
Cement (1.2 t / m <sup>3</sup> )	4,273	6,483	6,821	6,508	5,775	29,860

## CARGO HANDLING EQUIPMENT

Loading Through Midship Hopper

Air Draft to Hopper: 19.2 m to Guardrail, 18.2 m to Inlet Flange

Pneumatic Loading Port Side

Loading Rate: 4 x lines 300 tph each (1,200 tph total)

Manifold Arrangement: 4x lines, 400NB DIN PN10 flanges

Air Supply to Shore: 2x Lines Port only, 250NB DIN PN10

Pneumatic Loading Starboard Side

Loading Rate: 2 x lines 300 tph each (600 tph total)

Manifold Arrangement: 2 x lines, 400NB DIN PN10 Flanges

Dust Collectors

2 x 7,200 m<sup>3</sup> / hr per cargo hold

72,000 m<sup>3</sup> / hr total capacity

Unloading Pneumatic

4 x 400NB lines @ 300 tph ea. or

2 x 400NB lines @ 600 tph ea.

(Max, Basis Cement Cargo and Subject to Shore Receiving Piping Arrangement)

Distance from Bow to Center of Discharge Pipes = 82.2 m

Max Air Delivery to Shore: 30,480 m<sup>3</sup> / hr.

Hose Handling Cranes

1 x 25 tonne @ 24 m on Ship Centerline

(Outreach 10.40 m from Ship Side)

1 x 10 tonne @ 16 m Port Side

(Outreach 11.45 m from Ship Side)

1 x 1.5 tonne @ 8 m Starboard Side

(Outreach 3.20 m from Ship Side).

## CONSUMPTION (TONNES PER DAY)

	SPEED		MAIN ENGINE HFO		A/E
	Loaded	Ballast	Loaded	Ballast	HFO
Sea	13.7	14.2	22.5	22.5	1.5
Port/ Anchorage			N/A	N/A	1.5
Loading/ Discharge			N/A	N/A	2.6/13.0

All specifications given in good faith but without guarantee.