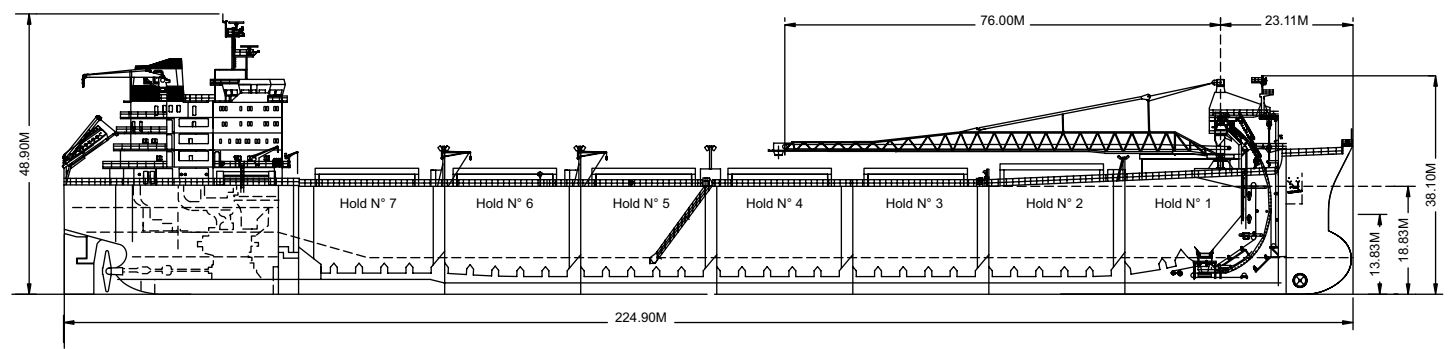
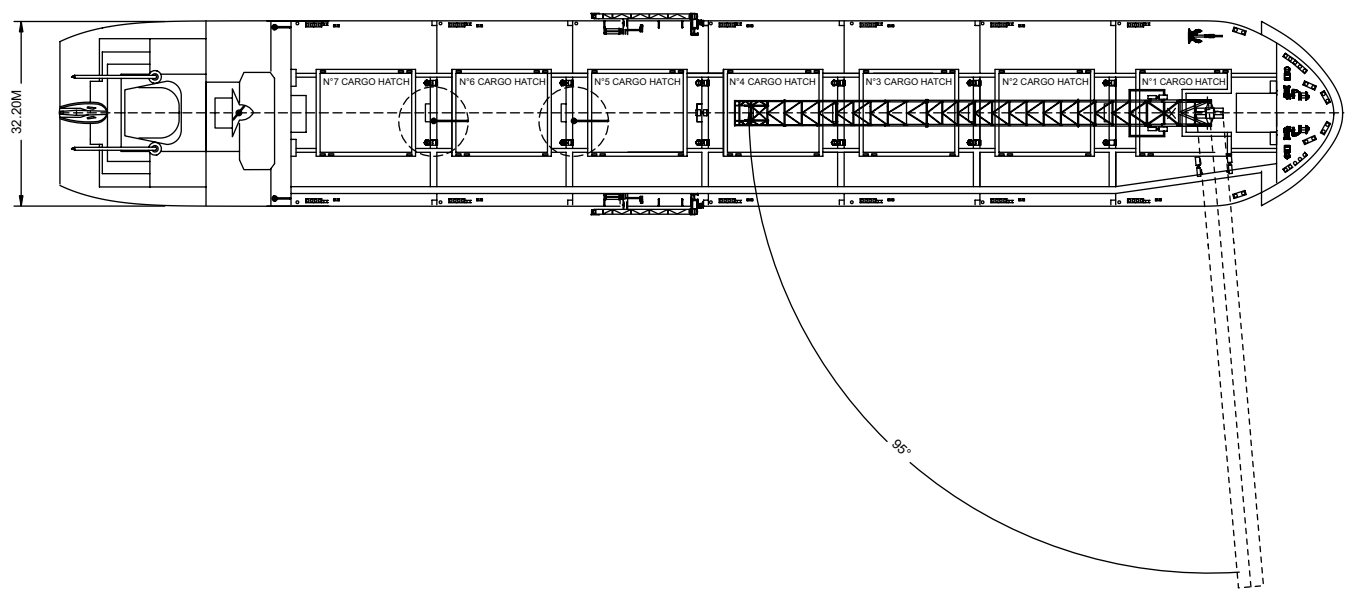
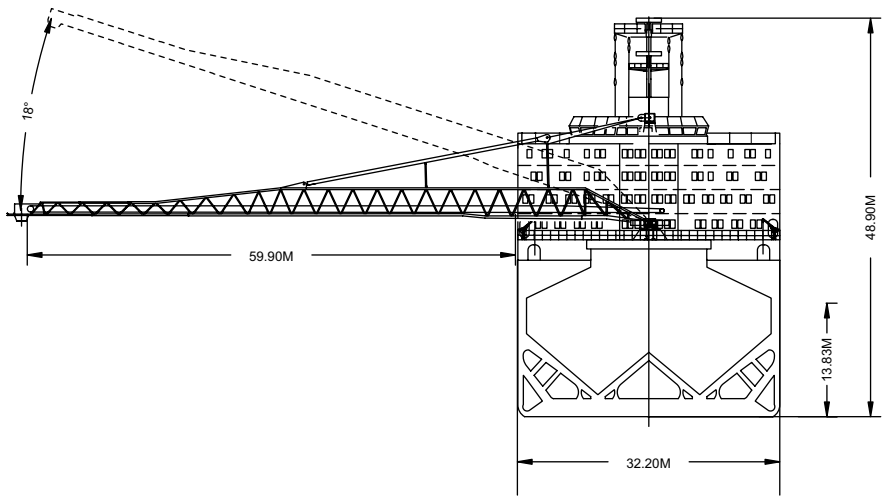




Harmen Oldendorff departing Boston after discharging salt

| | |
|---|--|
| Built | 2005, converted to SUL-bulkcarrier in 2006 |
| Classification | GL +100 A5, BC-B, ESP, E1, IW, C1D11, + MC, E1 |
| Length Overall | 224.90 metres |
| Breadth Moulded | 32.20 metres |
| Depth Moulded | 18.84 metres |
| Total Hold Capacity (including hatches) | 61,521 cubic metres |
| Deadweight | 66,188 tonnes |
| Draft | 13.83 metres |
| Gross Tonnage | 42,033 tonnes |
| Net Tonnage | 18,012 tonnes |
| Bow Thruster | 1,500 kW |
| Length of Boom | 76.0 metres |
| Discharge Rate (maximum) | 4,000 tonnes/hr |
| | (or 5,000 cubic metres/hr) |



0981-04 11/24/06

| Air Drafts | | | | | | | | | | | | |
|------------------------------|-------|----------|---------|---------|-------|------------|-----------|---------|--------|-------|--------------------|---------|
| <i>(metres)</i> | | | | | | | | | | | | |
| Draft Condition | Stem | Foremast | Hatches | | | Cargo Gear | Main Mast | | Funnel | Stern | Other Obstruction* | Maximum |
| | | | Forward | Midship | Aft | | Deployed | Lowered | | | | |
| Keel | 26.00 | 38.10 | 23.75 | 20.85 | 20.85 | 37.60 | 48.90 | 48.90 | 41.40 | 19.00 | N/A | 48.90 |
| Light Ship | 24.00 | 37.30 | 22.00 | 18.20 | 17.40 | 35.50 | 43.50 | 43.50 | 35.80 | 13.50 | N/A | 43.50 |
| Normal Ballast 50% Bunker | 20.20 | 32.24 | 17.05 | 13.97 | 13.41 | 31.70 | 41.15 | 41.15 | 33.60 | 11.10 | N/A | 41.15 |
| Fully Loaded 50% Bunker | 12.17 | 24.27 | 9.92 | 8.02 | 8.02 | 23.77 | 35.07 | 35.07 | 27.57 | 5.17 | N/A | 35.07 |

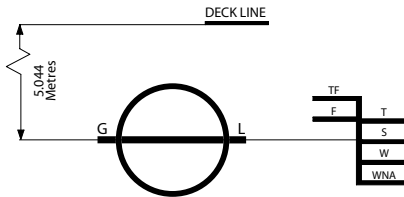
| Hatch and Hold Specifications | | | | | | | | | |
|--------------------------------------|--------------------|--------------------|--------------------|--------------------|--------------------|--------------------|--------------------|--------------------|--|
| Hold Number | 1 | 2 | 3 | 4 | 5 | 6 | 7 | TOTAL | |
| Hold Volumes (cubic metres) | | | | | | | | | |
| Cubic (grain) | 7,440 | 9,256 | 9,076 | 9,079 | 9,075 | 8,852 | 8,743 | 61,521 | |
| Cubic in Hatchcoaming | 463 | 596 | 508 | 508 | 508 | 508 | 508 | 3,599 | |
| Hold Openings (metres) | | | | | | | | | |
| Number of Openings | 1 | 1 | 1 | 1 | 1 | 1 | 1 | 7 | |
| Opening Length | 16.7 / 8.8 | 16.7 | 16.7 | 16.7 | 16.7 | 16.7 | 16.7 | 16.7 | |
| Opening Width | 15.2 / 2 x 4.18 | 15.2 | 15.2 | 15.2 | 15.2 | 15.2 | 15.2 | 15.2 | |
| Coaming Height above Keel | 23.0 | 21.7 | 21.0 | 21.0 | 21.0 | 21.0 | 21.0 | 21.0 | |
| Hatch Information (metres) | | | | | | | | | |
| Description | Side Rolling | Side Rolling | Side Rolling | Side Rolling | Side Rolling | Side Rolling | Side Rolling | | |
| Operation | Electric/Hydraulic | Electric/Hydraulic | Electric/Hydraulic | Electric/Hydraulic | Electric/Hydraulic | Electric/Hydraulic | Electric/Hydraulic | Electric/Hydraulic | |
| Hatch Length | 17.00 m | 17.00 m | 17.00 m | 17.00 m | 17.00 m | 17.00 m | 17.00 m | 17.00 m | |
| Hatch Width | 7.75 m | 7.75 m | 7.75 m | 7.75 m | 7.75 m | 7.75 m | 7.75 m | 7.75 m | |
| Hatch Top Height above Keel | 24.85 m | 22.75 m | 21.95 m | 21.95 m | 21.95 m | 21.95 m | 21.95 m | 21.95 m | |

| Cargo Handling Equipment | |
|---|--------------------------|
| • Fixed Type Conveyor along boom | |
| • Two variable speed (0.47 - 1.75m/s) hold conveyors | |
| • Two fixed speed (2.54m/s) transfer conveyors | |
| • One variable speed (1.43 - 4.77m/s) 'C' loop conveyor | |
| • One fixed speed (3.80m/s) boom conveyor | |
| • Hold conveyor belts 2.20m wide | |
| • Transfer conveyor belts 2.20m wide | |
| • 'C' loop conveyor 2.52m (outside belt) and 2.70m (inner belt) wide | |
| • Boom conveyor 1.80m wide | |
| • All belts have 35 degree trough | |
| • Dust Suppression: Holds are filled with positive air pressure dust collectors plus water/air sprayers on the boom | |
| • Discharge Rate: | |
| Coal | 5,000 m ³ /hr |
| Ore/Gypsum/Granite | 4,000 tonnes/hr |
| • Boom working area: 95° to port, 95° to starboard side | |
| • Maximum Boom Outreach: 61.90 metres | |

| Consumption (tonnes per day) | | | | | |
|-------------------------------------|--------|---------|-----------------|---------|------------|
| | Speed | | Main Engine HFO | | Generators |
| | Loaded | Ballast | Loaded | Ballast | MDO |
| Sea | 14.4 | 15.0 | 46.0 | 42.0 | 2.2 |
| Port / Anchorage | | | N/A | N/A | 2.0 |
| Loading / Discharge | | | N/A | N/A | 2.0 / 7.6 |

For more information on this ship please visit www.cslships.com





| DEADWEIGHT SCALE | | | | | | | | | |
|------------------|--------|-------------|--------|--------------|----------|------------|-----------|---------|--|
| DRAFT | | | | DISPLACEMENT | TPC | DEADWEIGHT | DRAFT | | |
| Sea Water | | Fresh Water | | | | | Sea Water | | |
| (metre) | (feet) | (metre) | (feet) | (tonnes) | (tonnes) | (tonnes) | (feet) | (metre) | |
| 15 | | 15 | | | | | 15 | | |
| | 48 | | 48 | 90,000 | | 70,000 | 48 | 15 | |
| 14 | | 14 | | | | | 46 | 14 | |
| | 46 | | 46 | | | | | | |
| | 44 | | 44 | 80,000 | 67 | | 44 | | |
| 13 | | 13 | | | | 60,000 | 42 | 13 | |
| | 42 | | 42 | | | | | | |
| | 40 | | 40 | | | | 40 | 12 | |
| 12 | | 12 | | 70,000 | 66 | | 38 | | |
| | 38 | | 38 | | | 50,000 | | | |
| | 36 | | 36 | | | | 36 | 11 | |
| | 34 | | 34 | | | | | | |
| 10 | | 10 | | 60,000 | | 40,000 | 32 | 10 | |
| | 32 | | 32 | | | | | | |
| | 30 | | 30 | | | | 30 | 9 | |
| | 28 | | 28 | 50,000 | 63 | 30,000 | 28 | | |
| 8 | | 8 | | | | | 26 | 8 | |
| | 26 | | 26 | | | | | | |
| | 24 | | 24 | | | | 24 | 7 | |
| | 22 | | 22 | 40,000 | 62 | 20,000 | 22 | | |
| | 20 | | 20 | | | | 20 | 6 | |
| 6 | | 6 | | | | | | | |
| | 18 | | 18 | 30,000 | | 10,000 | 18 | | |
| | 16 | | 16 | | | | 16 | 5 | |
| 5 | | 5 | | | | | | | |
| | 14 | | 14 | | | | 14 | 4 | |
| | 12 | | 12 | 20,000 | 59 | 0 | 12 | | |
| 4 | | 4 | | | | | | | |
| | 10 | | 10 | | | | 10 | 3 | |
| 3 | | 3 | | | | | | | |
| | 8 | | 8 | | | | 8 | | |
| 2 | | | | 10,000 | | | | 2 | |

| ASSIGNED DRAFTS | | | |
|-----------------|---------------|-----------------|--------------|
| Season | Draft (metre) | Displ. (tonnes) | DWT (tonnes) |
| TF | 14.43 | 86,598 | 68,095 |
| F | 14.14 | 84,696 | 66,193 |
| T | 14.12 | 86,637 | 68,134 |
| S | 13.83 | 84,691 | 66,188 |
| W | 13.54 | 82,750 | 64,247 |
| WNA | 13.25 | 80,812 | 62,309 |

Light Ship
18,503 tonnes

0981-04 11/27/06



For more information on this ship please visit www.cslships.com