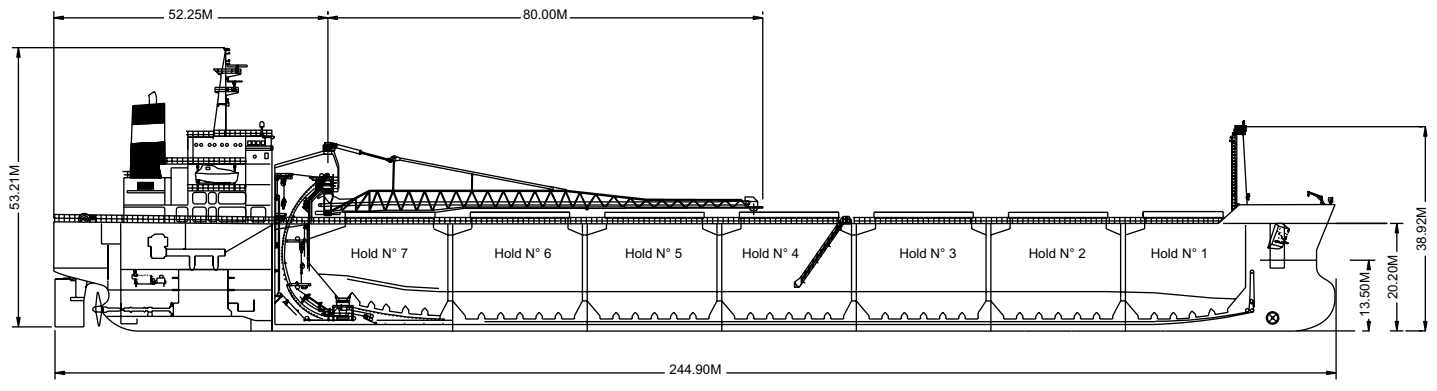
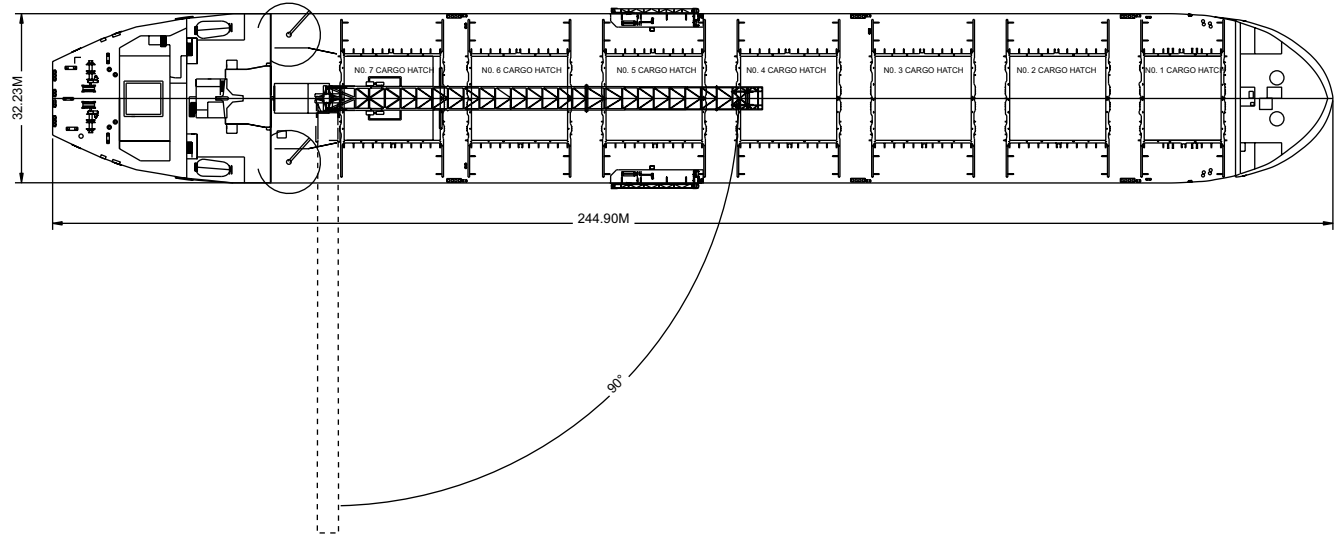
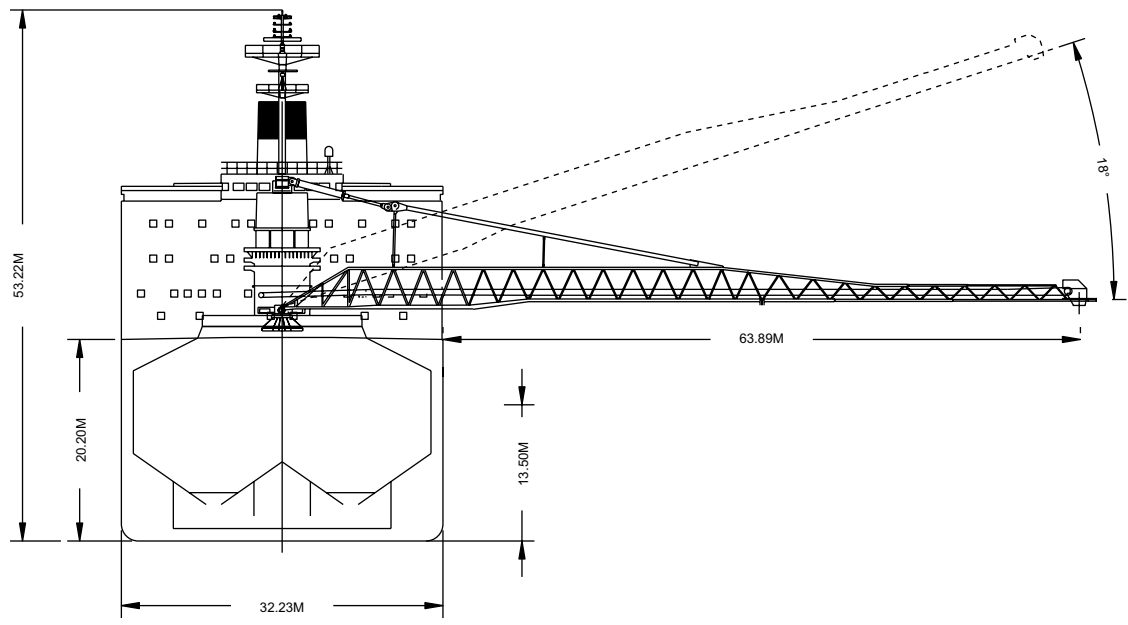




CSL Argosy on sea trials.

Built	1981, rebuilt with a new forebody in 2006
Classification	Lloyds+100A1, Bulk Carrier,ESP, Shipright(SDA,FDA,CM)+LMC,UMS
Length Overall	244.90 metres
Breadth Moulded	32.23 metres
Depth Moulded	20.20 metres
Total Hold Capacity (including structure)	75,243.80 cubic metres
Deadweight	74,423.00 tonnes
Draft (summer)	13.50 metres
Gross Tonnage	46,409.00 tonnes
Net Tonnage	17,235.00 tonnes
Bow Thruster	1,500.00 kW
Length of Boom	80.00 metres
Discharge Rate (design)	
	Coal 4,200.00 tonnes/hr
	Gypsum 4,500.00 tonnes/hr
	Stone 5,000.00 tonnes/hr
	Iron Ore 6,000.00 tonnes/hr
	Maximum 6,000.00 tonnes/hr



0981-04 04/25/06

Air Drafts												
(metres)												
Draft Condition	Stem	Foremast	Hatches			Cargo Gear	Main Mast		Funnel	Stern	Other Obstruction	Maximum
			Forward	Midship	Aft		Deployed	Lowered				
Keel	24.1	38.92	22.15	22.15	22.15	36.13	53.21	50.20	43.45	20.20	N/A	53.21
Light Ship	23.51	38.00	21.03	19.64	18.23	32.00	48.71	45.70	38.74	15.09	N/A	48.71
Normal Ballast 50% Bunker	17.02	31.70	14.84	14.22	13.59	27.48	44.40	41.38	34.54	11.12	N/A	44.40
Fully Loaded 50% Bunker	10.64	25.45	8.68	8.65	8.62	22.60	39.67	36.66	29.91	6.64	N/A	39.67

Hatch and Hold Specifications									
Hold Number	1	2	3	4	5	6	7	TOTAL	
Hold Volumes (cubic metres)									
Cubic	8,994.76	11,135.97	11,139.83	11,139.79	11,139.78	11,139.77	10,177.69	74,867.59	
Maximum Grain	9,039.96	11,191.93	11,195.81	11,195.77	11,195.76	11,195.75	10,228.84	75,243.82	
Grain in way of Hatch	45.20	55.96	55.98	55.98	55.98	55.98	51.15	376.23	
Hold Openings (metres)									
Number of Openings	1	1	1	1	1	1	1	7	
Opening Length	14.63	18.29	18.29	18.29	18.29	18.29	16.46		
Opening Width	15.98	15.98	15.98	15.98	15.98	15.98	15.98		
Coaming Height above Keel	21.50	21.50	21.50	21.50	21.50	21.50	21.50		
Hatch Information (metres)									
Description	Side Rolling Panels	Side Rolling Panels	Side Rolling Panels	Side Rolling Panels	Side Rolling Panels	Side Rolling Panels	Side Rolling Panels		
Operation	Hydraulic	Hydraulic	Hydraulic	Hydraulic	Hydraulic	Hydraulic	Hydraulic		
Hatch Length	14.93	18.59	18.59	18.59	18.59	18.59	16.76		
Hatch Width	16.30	16.30	16.30	16.30	16.30	16.30	16.30		
Hatch Top Height above Keel	22.15	22.15	22.15	22.15	22.15	22.15	22.15		

Cargo Handling Equipment
• Fixed type conveyor along boom
• Two 2.6m/s hold conveyors
• Two 2.5m/s transfer conveyors
• One 3.6m/s boom conveyor
• One 4.32m/s 'C' loop conveyor
• Tunnel belts 2.135m wide
• Boom belt 1.981m wide
• Transfer belt 2.135m wide
• All belts have 35 degree trough
• Dust Suppression: Boom and transfer points are filled with positive air pressure dust collectors plus water sprayers on the boom and foam sprayers in the transfers.
• Discharge Rate: Coal4,200 tonnes/hr Ore6,000 tonnes/hr
• Maximum Boom Outreach: 63.89 metres

Speed Consumption					
	Speed		Consumption		
	Loaded	Ballast	Loaded	Ballast	Port
At Sea	13.00	14.00	35.00	35.00	N/A
Loading					2.50
Discharge					7.50

For more information on this ship please visit www.cslships.com

