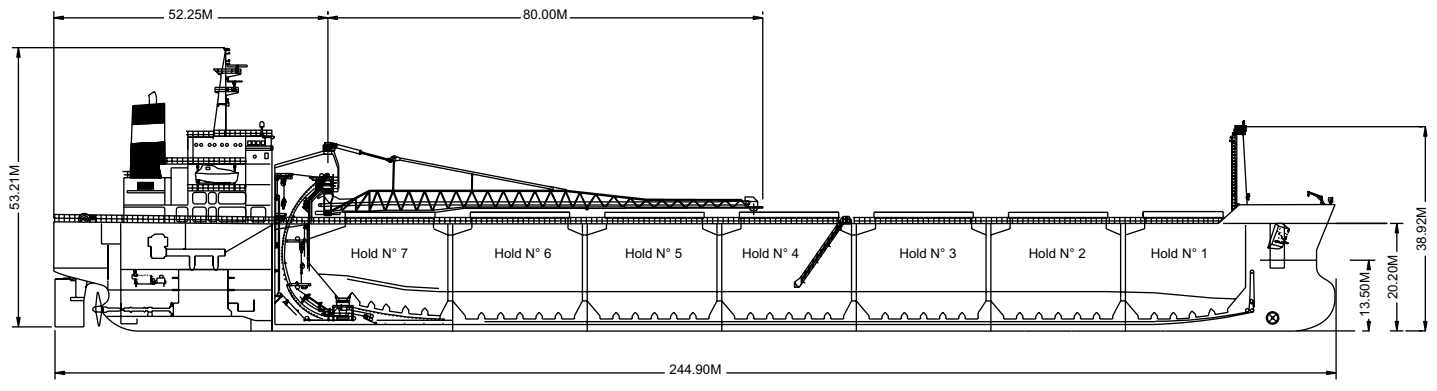
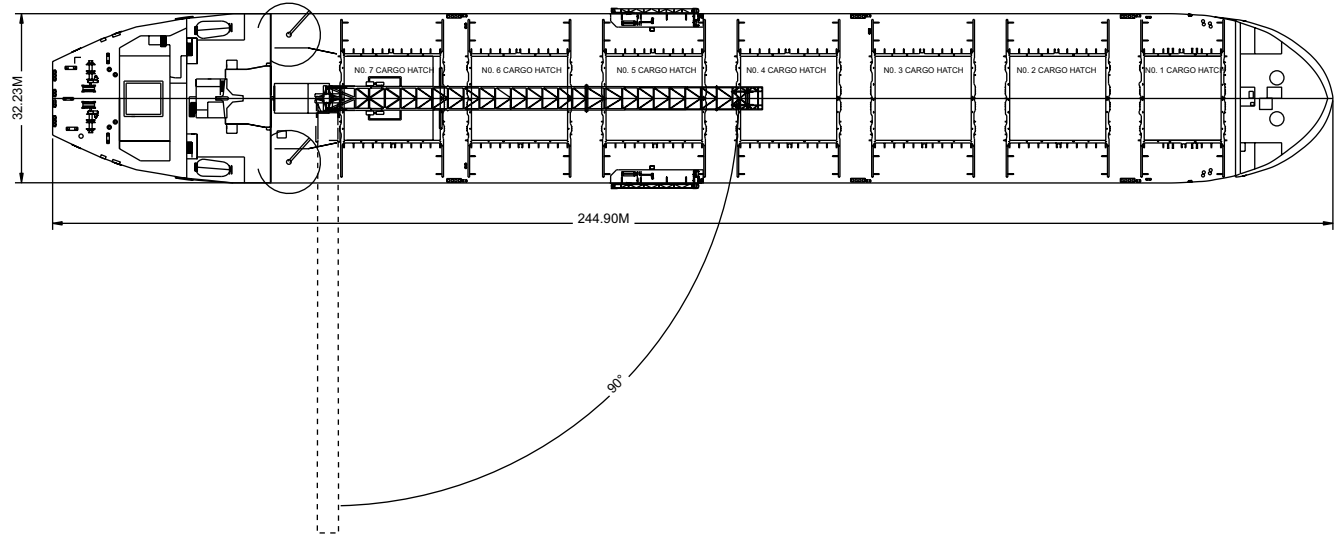
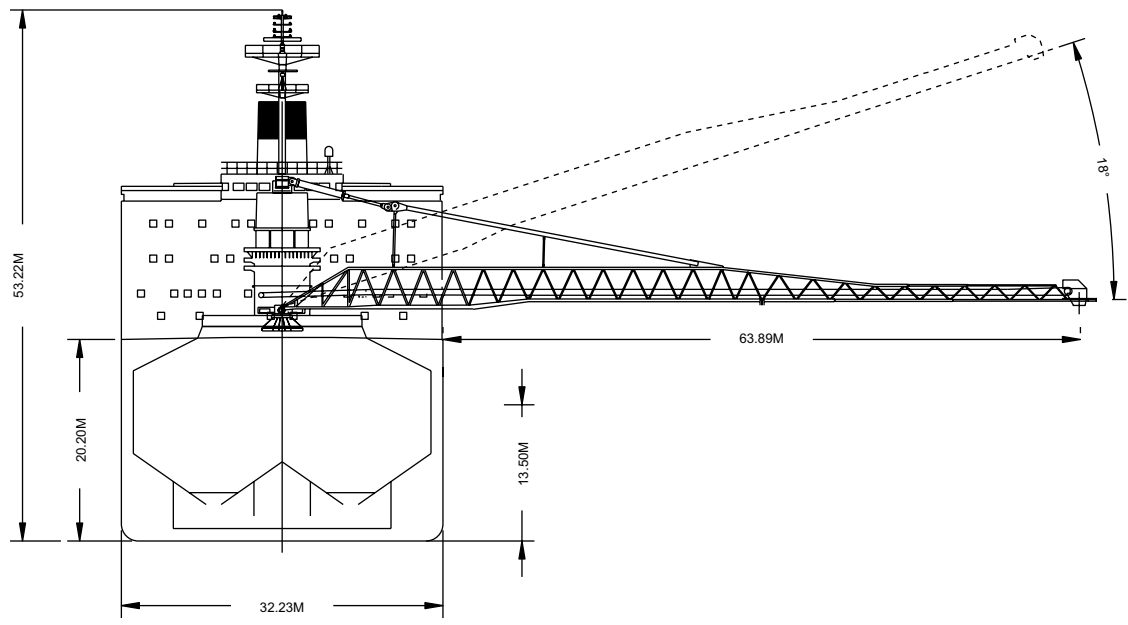




CSL Argosy on sea trials.

Built	1981, rebuilt with a new forebody in 2006
Classification	Lloyds+100A1, Bulk Carrier,ESP, Shipright(SDA,FDA,CM)+LMC,UMS
Length Overall	244.90 metres
Breadth Moulded	32.23 metres
Depth Moulded	20.20 metres
Total Hold Capacity (including structure)	75,243.80 cubic metres
Deadweight	74,423.00 tonnes
Draft (summer)	13.50 metres
Gross Tonnage	46,409.00 tonnes
Net Tonnage	17,235.00 tonnes
Bow Thruster	1,500.00 kW
Length of Boom	80.00 metres
Discharge Rate (design)	
	Coal 4,200.00 tonnes/hr
	Gypsum 4,500.00 tonnes/hr
	Stone 5,000.00 tonnes/hr
	Iron Ore 6,000.00 tonnes/hr
	Maximum 6,000.00 tonnes/hr



0981-04 04/25/06

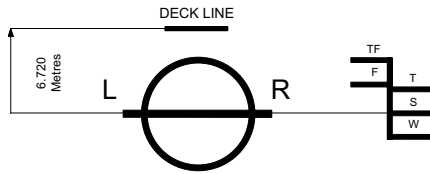
Air Drafts												
(metres)												
Draft Condition	Stem	Foremast	Hatches			Cargo Gear	Main Mast		Funnel	Stern	Other Obstruction	Maximum
			Forward	Midship	Aft		Deployed	Lowered				
Keel	24.1	38.92	22.15	22.15	22.15	36.13	53.21	50.20	43.45	20.20	N/A	53.21
Light Ship	23.51	38.00	21.03	19.64	18.23	32.00	48.71	45.70	38.74	15.09	N/A	48.71
Normal Ballast 50% Bunker	17.02	31.70	14.84	14.22	13.59	27.48	44.40	41.38	34.54	11.12	N/A	44.40
Fully Loaded 50% Bunker	10.64	25.45	8.68	8.65	8.62	22.60	39.67	36.66	29.91	6.64	N/A	39.67

Hatch and Hold Specifications									
Hold Number	1	2	3	4	5	6	7	TOTAL	
Hold Volumes (cubic metres)									
Cubic	8,994.76	11,135.97	11,139.83	11,139.79	11,139.78	11,139.77	10,177.69	74,867.59	
Maximum Grain	9,039.96	11,191.93	11,195.81	11,195.77	11,195.76	11,195.75	10,228.84	75,243.82	
Grain in way of Hatch	45.20	55.96	55.98	55.98	55.98	55.98	51.15	376.23	
Hold Openings (metres)									
Number of Openings	1	1	1	1	1	1	1	7	
Opening Length	14.63	18.29	18.29	18.29	18.29	18.29	16.46		
Opening Width	15.98	15.98	15.98	15.98	15.98	15.98	15.98		
Coaming Height above Keel	21.50	21.50	21.50	21.50	21.50	21.50	21.50		
Hatch Information (metres)									
Description	Side Rolling Panels	Side Rolling Panels	Side Rolling Panels	Side Rolling Panels	Side Rolling Panels	Side Rolling Panels	Side Rolling Panels	Side Rolling Panels	
Operation	Hydraulic	Hydraulic	Hydraulic	Hydraulic	Hydraulic	Hydraulic	Hydraulic	Hydraulic	
Hatch Length	14.93	18.59	18.59	18.59	18.59	18.59	16.76		
Hatch Width	16.30	16.30	16.30	16.30	16.30	16.30	16.30		
Hatch Top Height above Keel	22.15	22.15	22.15	22.15	22.15	22.15	22.15		

Cargo Handling Equipment
• Fixed type conveyor along boom
• Two 2.6m/s hold conveyors
• Two 2.5m/s transfer conveyors
• One 3.6m/s boom conveyor
• One 4.32m/s 'C' loop conveyor
• Tunnel belts 2.135m wide
• Boom belt 1.981m wide
• Transfer belt 2.135m wide
• All belts have 35 degree trough
• Dust Suppression: Boom and transfer points are filled with positive air pressure dust collectors plus water sprayers on the boom and foam sprayers in the transfers.
• Discharge Rate: Coal4,200 tonnes/hr Ore6,000 tonnes/hr
• Maximum Boom Outreach: 63.89 metres

Consumption (tonnes per day)				
	Speed		Main Engine	Generators
	Loaded	Ballast	IFO	IFO
Sea	14.5	15.0	48.0	2.5
Port / Anchorage			N/A	2.5
Loading / Discharge			N/A	2.5 / 7.5

For more information on this ship please visit www.cslships.com



ASSIGNED DRAFTS			
Season	Draft (metre)	Displ. (tonnes)	DWT (tonnes)
TF	14.10	93,236	76,427
F	13.81	91,239	74,430
T	13.78	93,273	76,464
S	13.50	91,232	74,423
W	13.22	89,195	72,386

Light Ship
16,809 tonnes

DEADWEIGHT SCALE									
DRAFT				DISPLACEMENT (tonnes)	TPC (tonnes)	DEADWEIGHT (tonnes)	DRAFT		
Sea Water		Fresh Water					Sea Water		
(metre)	(feet)	(metre)	(feet)				(feet)	(metre)	(metre)
18	60		60				60		18
	58	18	58	120,000			58		17
17	56		56			100,000	56		16
	54	17	54	110,000	74		54		15
16	52		52			90,000	52		14
	50	16	50				50		13
15	48		48	100,000	73		48		12
	46	15	46			80,000	46		11
14	44		44	90,000			44		10
	42	14	42		72		42		9
13	40		40			70,000	40		8
	38	13	38	80,000			38		7
12	36		36		71		36		6
	34	12	34	70,000			34		5
11	32		32		70		32		4
	30	11	30	60,000			30		3
10	28		28			40,000	28		2
	26	10	26		69		26		1
9	24		24	50,000			24		0
	22	9	22			30,000	22		
8	20		20	40,000			20		
	18	8	18		68		18		
7	16		16			20,000	16		
	14	7	14	30,000			14		
6	12		12		67		12		
	10	6	10	20,000			10		
5	8		8		66		8		
	6	5	6			0	6		
4					65				
3									
2				10,000					
1									

0981-04 06/13/06



For more information on this ship please visit
www.cslships.com