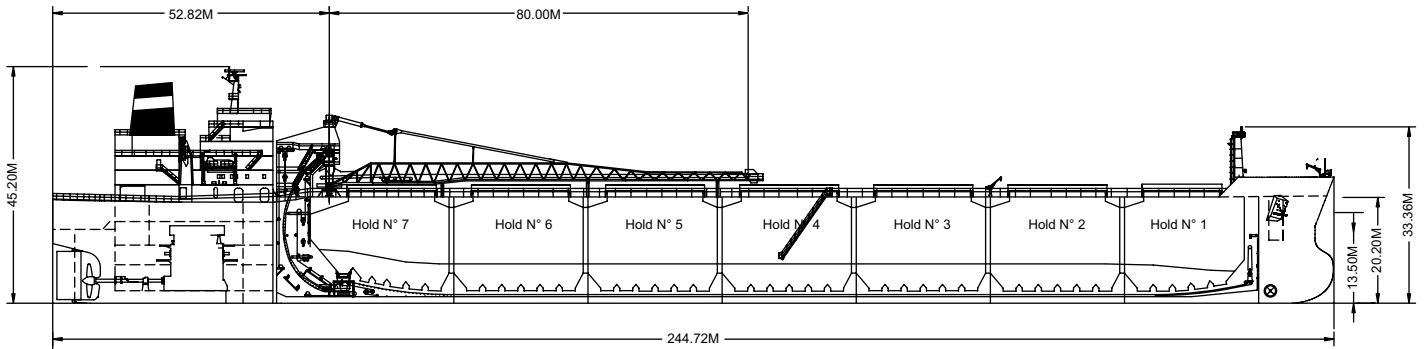
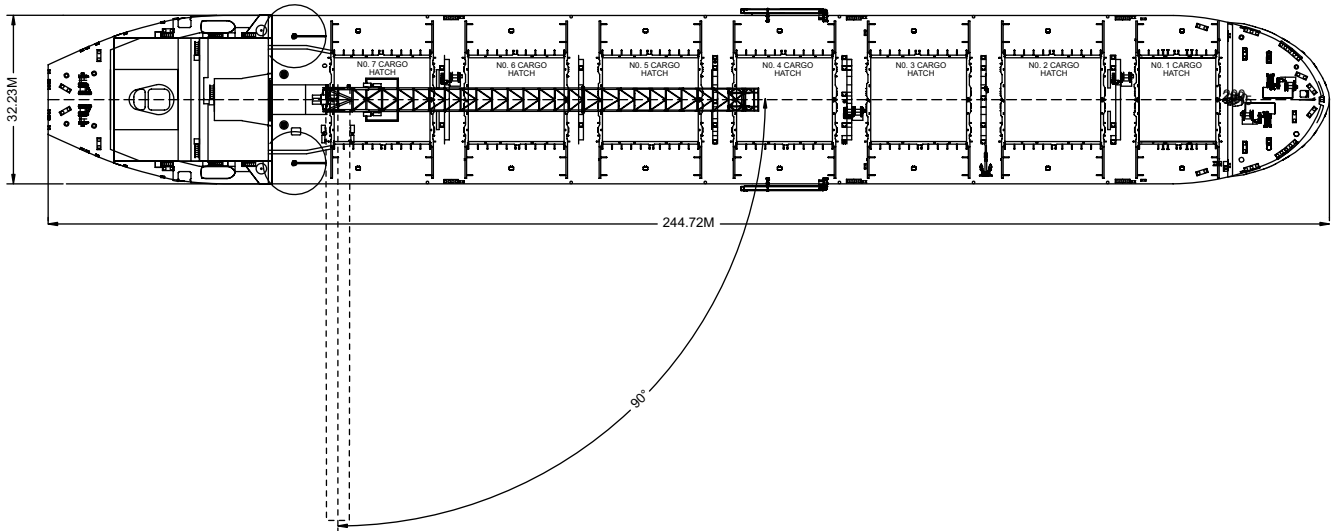
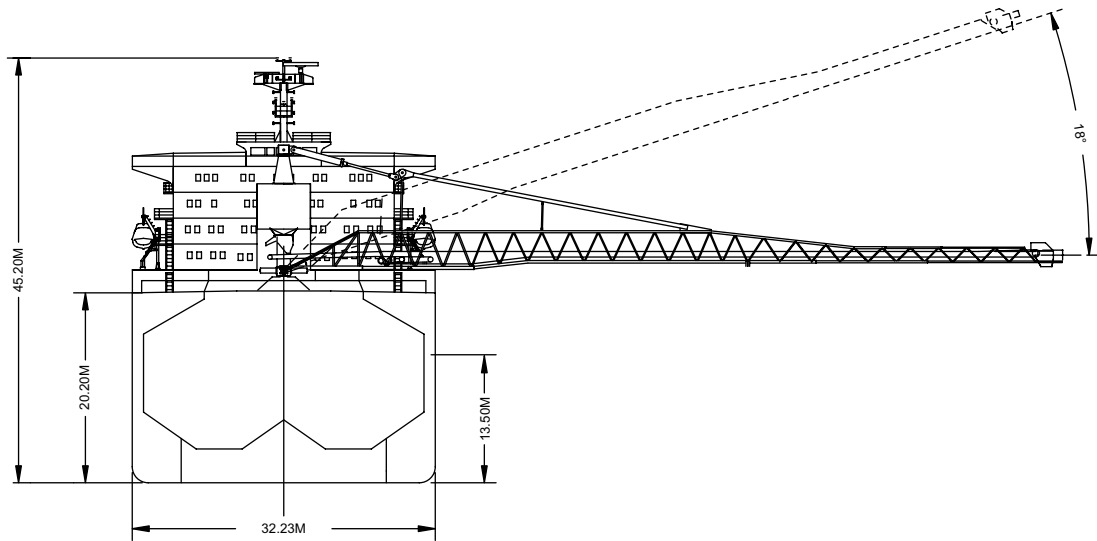




Built	..... 1982, rebuilt with new forebody in 2006
Classification	.. Lloyds+100 A1 ESP Shipright (SDA,FDA,CM) LI, LMC, UMS
Length Overall	..... 244.72 metres
Breadth Moulded	..... 32.23 metres
Depth Moulded	..... 20.20 metres
Total Hold Capacity (including hatches)	..... 75,243 cubic metres
Deadweight	..... 75,569 tonnes
Draft (Summer)	..... 13.50 metres
Gross Tonnage	..... 46,068 tonnes
Net Tonnage	..... 17,218 tonnes
Bow Thruster	..... 1,500 kW
Length of Boom	..... 80.0 metres
Discharge Rate	Coal..... 4,200 tonnes/hr
	Gypsum..... 4,500 tonnes/hr
	Stone..... 5,000 tonnes/hr
	Iron Ore..... 6,000 tonnes/hr
	Gypsum..... 6,000 tonnes/hr



0981-04 09/06/06

<b>Air Drafts</b> (metres)												
Draft Condition	Stem	Foremast	Hatches			Cargo Gear	Main Mast		Funnel	Stern	Other Obstruction*	Maximum
			Forward	Midship	Aft		Deployed	Lowered				
Keel	24.10	33.36	22.15	22.15	22.15	36.14	45.20	N/A	44.81	19.90	N/A	45.20
Light Ship	23.51	32.20	20.18	19.65	18.48	32.29	41.07	N/A	40.48	15.24	N/A	41.07
Normal Ballast 50% Bunker	15.70	25.85	14.60	14.25	14.03	27.97	36.96	N/A	36.52	11.53	N/A	36.96
Fully Loaded 50% Bunker	10.60	19.85	8.65	8.65	8.65	22.63	31.69	N/A	31.31	6.40	N/A	31.69

<b>Hatch and Hold Specifications</b>									
Hold Number	1	2	3	4	5	6	7	TOTAL	
<b>Hold Volumes (cubic metres)</b>									
Cubic	8,994	11,136	11,140	11,140	11,140	11,140	10,178	74,866	
Maximum Grain	9,039	11,192	11,196	11,196	11,196	11,196	10,229	75,243	
Grain in way of Hatch	45	56	56	56	56	56	51	376	
<b>Hold Openings (metres)</b>									
Number of Openings	1	1	1	1	1	1	1	7	
Opening Length	14.6	18.3	18.3	18.3	18.3	18.3	16.5		
Opening Width (Normal)	16.0	16.0	16.0	16.0	16.0	16.0	16.0		
Opening Width (Extra)	17.1	17.1	17.1	17.1	17.1	17.1	17.1		
Coaming Height above Keel	21.5	21.5	21.5	21.5	21.5	21.5	21.5		
<b>Hatch Information (metres)</b>									
Description	Side Rolling	Side Rolling	Side Rolling	Side Rolling	Side Rolling	Side Rolling	Side Rolling	Side Rolling	
Operation	Hydraulic	Hydraulic	Hydraulic	Hydraulic	Hydraulic	Hydraulic	Hydraulic	Hydraulic	
Hatch Length	14.968 m	18.628 m	18.628 m	18.628 m	18.628 m	18.628 m	18.628 m	16.798 m	
Hatch Width	16.34 m	16.34 m	16.34 m	16.34 m	16.34 m	16.34 m	16.34 m	16.34 m	
Hatch Top Height above Keel	22.15 m	22.15 m	22.15 m	22.15 m	22.15 m	22.15 m	22.15 m	22.15 m	

<b>Cargo Handling Equipment</b>
• Fixed Type Conveyor along boom
• Two 2.6m/s Hold Conveyors
• Two 2.5m/s Transfer Conveyors
• One 3.6m/s Boom Conveyor
• One 4.32m/s 'C' Loop Conveyor
• Tunnel Belts 2.135m wide
• Boom Belt 1.981m wide
• Transfer Belt 2.135m wide
• All Belts have 35 degree trough
• Dust Suppression: Boom and transfer points are filled with positive air pressure dust collectors plus water sprayers on the boom and foam sprayers in the transfers.
• Discharge Rate: Coal .....4,200 tonnes/hr Ore .....6,000 tonnes/hr
• Maximum Boom Outreach: 63.89 metres

<b>Consumption (tonnes per day)</b>				
	Speed		Main Engine	Generators
	Loaded	Ballast	IFO	IFO
Sea	15.0	15.5	48.00	2.5
Port / Anchorage			N/A	2.5
Loading / Discharge			N/A	2.5 / 7.5

For more information on this ship please visit  
[www.cslships.com](http://www.cslships.com)

